

CINNAMON TREE A P.U.D.

LOTS 6, 7, AND 8, LYING EAST OF U.S. HWY 1, BLOCK 4, PLAT NO. 1, ST. LUCIE GARDENS AS RECORDED IN PLAT BOOK 1, PAGE 35, PUBLIC RECORDS OF ST. LUCIE (NOW MARTIN) COUNTY FLORIDA.—IN SEC. 18 T 37S R 41E, MARTIN COUNTY, FL.

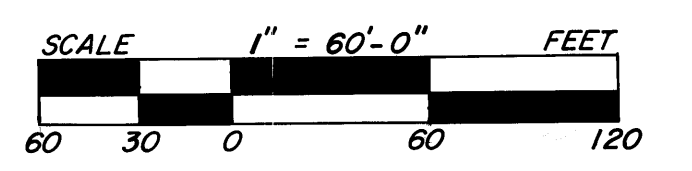
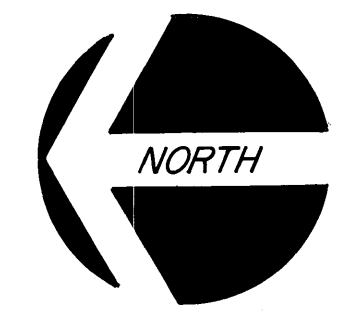
LOT 5, BLK 4
S00°02'43"W-1325.08'

PLAT #1 ST. LUCIE GARDENS
PLAT BOOK 1, PAGE 35, ST. LUCIE
(NOW MARTIN) COUNTY, FLORIDA

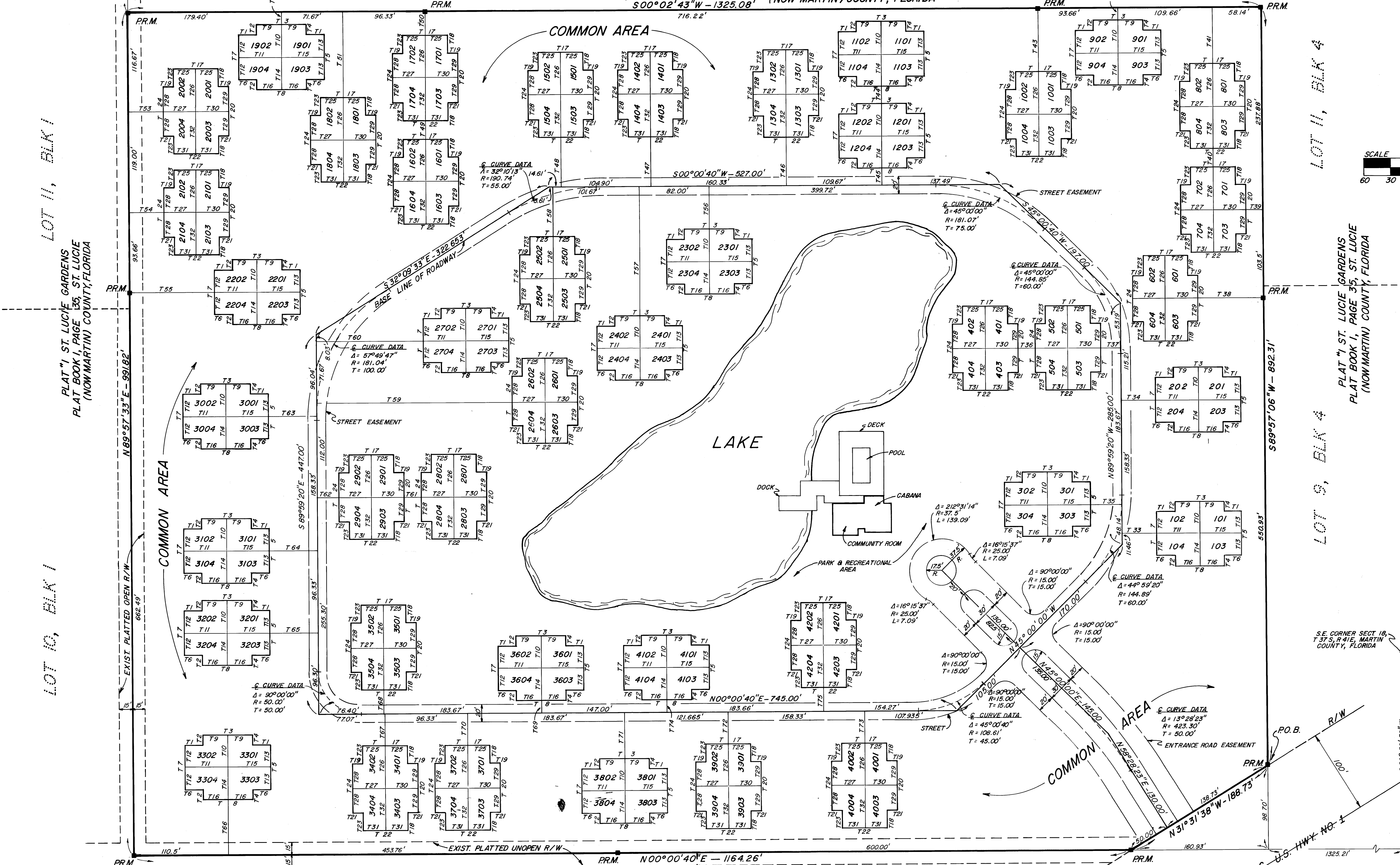
CLERK'S RECORDING CERTIFICATE
I, LOUISE V. ISAACS, CLERK OF THE CIRCUIT COURT OF MARTIN COUNTY, FLORIDA, HEREBY CERTIFY THAT THIS PLAT WAS FILED FOR RECORD IN PLAT BOOK 1, PAGE 35, MARTIN COUNTY, FLORIDA, PUBLIC RECORDS, THIS DAY OF _____, 1981.
LOUISE V. ISAACS,
CLERK CIRCUIT COURT
MARTIN COUNTY, FLA.
BY: _____
DEPUTY CLERK

PL B 8
Pg 73

LOT 11, BLK 4



JULY 2, 1981



NO.	BEARINGS	DIST. (FT.)
T01	S00°00'40"W	21.00
T02	S89°59'20"E	12.00
T03	S00°00'40"W	58.00
T04	N89°59'20"W	12.00
T05	N89°59'20"W	52.33
T06	N00°00'40"E	21.00
T07	S89°59'20"E	52.33
T08	N00°00'40"E	52.33
T09	S00°00'40"W	29.00
T10	S89°59'20"E	58.17
T11	N00°00'40"E	26.17
T12	S89°59'20"E	26.17
T13	N89°59'20"W	26.17
T14	N00°00'40"E	50.00
T15	N00°00'40"E	50.00
T16	N00°00'40"E	50.00
T17	S00°00'40"W	52.33
T18	N89°59'20"W	21.00
T19	S00°00'40"W	58.00
T20	N00°00'40"E	58.00
T21	N00°00'40"E	12.00
T22	N00°00'40"E	58.00
T23	S89°59'20"E	21.00
T24	S00°00'40"W	58.00
T25	S00°00'40"W	50.00
T26	S89°59'20"E	50.00
T27	N00°00'40"E	38.17
T28	S89°59'20"E	29.00
T29	N89°59'20"W	29.00
T30	N00°00'40"E	38.17
T31	N00°00'40"E	26.17
T32	S89°59'20"E	50.00
T33	S00°00'40"W	40.21
T34	S00°00'40"W	23.30
T35	N00°00'40"E	36.80
T36	N00°00'40"E	20.00
T37	S89°59'20"E	23.30
T38	N00°00'40"E	76.73
T39	N00°00'40"E	20.19
T40	S89°59'20"E	22.00
T41	N89°59'20"W	65.00
T42	N89°59'20"W	14.30
T43	N89°59'20"W	74.38
T44	S89°59'20"E	20.00
T45	S89°59'20"E	20.00
T46	S89°59'20"E	58.51
T47	S89°59'20"E	58.51
T48	S89°59'20"E	58.51
T49	N89°59'20"W	22.00
T50	N89°59'20"W	28.48
T51	N89°59'20"W	100.87
T52	N89°59'20"W	18.08
T53	S00°00'40"W	40.73
T54	S00°00'40"W	40.64
T55	S00°00'40"W	59.08
T56	N89°59'20"W	50.33
T57	N89°59'20"W	151.66
T58	N89°59'20"W	58.16
T59	S00°00'40"W	228.57
T60	S00°00'40"W	125.01
T61	S00°00'40"W	20.00
T62	S00°00'40"W	25.24
T63	N00°00'40"E	56.59
T64	N00°00'40"E	56.59
T65	N00°00'40"E	56.59
T66	S89°59'20"E	65.00
T67	N89°59'20"W	37.37
T68	S89°59'20"E	28.30
T69	S89°59'20"E	18.30
T70	N89°59'20"W	37.37
T71	N89°59'20"W	53.87
T72	N89°59'20"W	37.37
T73	N89°59'20"W	37.37
T74	S89°59'20"E	126.30
T75	S89°59'20"E	26.30

SHEET 2 of 2

MATHERS & ASSOCIATES
ENGINEERS-SURVEYORS
MARTIN COUNTY, FL. 287-0525

LOT 10, BLK 1
LOT 11, BLK 1

PLAT #1 ST. LUCIE GARDENS
PLAT BOOK 1, PAGE 35, ST. LUCIE
(NOW MARTIN) COUNTY, FLORIDA

LOT 9, BLK 4
PLAT #1 ST. LUCIE GARDENS
PLAT BOOK 1, PAGE 35, ST. LUCIE
(NOW MARTIN) COUNTY, FLORIDA

LOT 1, BLK 3

PLAT #1, ST. LUCIE GARDENS, PLAT BOOK 1, PAGE 35,
ST. LUCIE (NOW MARTIN) COUNTY, FLORIDA

LOT 2, BLK 3

SOUTH 1/4 CORNER